



# CONFERENCES AND CELEBRATIONS



BAYERISCHER HOF



# THE LOCATION: INCOMPARABLE. YOUR EVENT: UNFORGETTABLE.

**WELCOME.** For over 180 years, the Hotel Bayerischer Hof has been valued by its guests as a leading world-class luxury hotel. Ideally situated in the Old Town district of Munich, it is in direct proximity to the most important sights and exclusive boutiques. Which venue would be more suitable to provide an appropriate setting for your private or corporate event?

Choose from any of our 40 fully air-conditioned function rooms for 10 up to 2,500 guests, equipped with state-of-the-art conference technology. You will find the right surroundings for every occasion: from the impressive ballroom ensemble to the classical rooms in the historical Palais Montgelas, which have been extensively renovated in 2020 by the Belgian interior designer and art dealer Axel Vervoordt, to the Roof Garden with its magnificent view of the towers of the

Frauenkirche. Our very own in-house cinema with state of the art image and sound control, offers various options for your event. In addition, the hotel's five restaurants and six bars are available for exclusive use.

Our team of conference and banqueting specialists is always at hand to help you plan your event, offering individual suggestions and creative ideas. They will make sure that creating a successful event at the Hotel Bayerischer Hof will be an experience, as enjoyable as the event itself.

In this brochure we have compiled an overview of our function rooms for you. For more detailed information, please contact our banqueting team or visit our website at [www.bayerischerhof.de](http://www.bayerischerhof.de).





## THE BALLROOM

Whether it's a grand ball, a festive banquet, an international congress or a successful conference, this is where society meets. The light-flooded Ballroom appears in Art Decó style. Curved staircases, stately galleries and the terrific stage fit

in the overall picture. Enjoy the skies over Munich, in the middle of our Ballroom. The unique glass roof construction can be opened in minutes to transform your event into a spectacular open air sensation.

## THE BALLROOM ENSEMBLE

All together, the adjoining rooms assemble to a spacious and spectacular hall: the Ballroom Ensemble. The Cocktail Lounge impresses with its elegant charm. In the Atrium – the centrepiece of the hotel – a glass dome rises 8.5 metres

above the floor. The 3.5 metre high fireplace is the eye-catcher of the Fireplace Lounge. One of the most modern bars in town can be found in the listed hall of mirrors from the year 1841 – the falk's Bar.



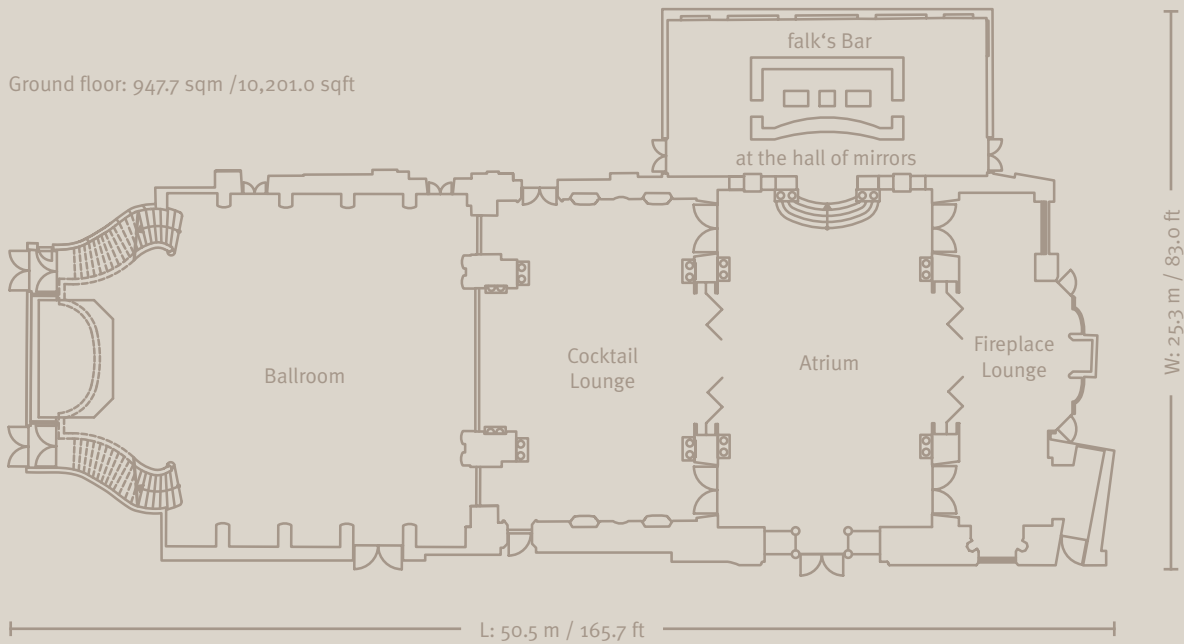
Ballroom Ensemble												
Rooms	L x W x H in m	Size in sqm	Size in sqft	Daylight	Boardroom	U-shape	Cabaret	Classroom style	Banquet	Theatre style	Reception	
1	Ballroom gr.floor	21.3 x 16.5 x 8.7	353.1	3,800.7	yes	96	54	140	188	220	447	400
2	Ballroom tier I	–	185.0	1,991.3	yes	–	–	–	–	–	110	150
3	Ballroom tier II	–	140.6	1,513.4	yes	–	–	–	–	–	100	–
4	Cocktail Lounge	16.9 x 12.0 x 3.9	170.7	1,837.4	no	36	41	70	80	150	160	200
	Ballroom complete*	–	849.4	9,142.9	yes	–	–	–	268	370	817	750
5	Atrium	17.2 x 11.2 x 5.4	191.3	2,059.1	yes	36	44	70	112	140	160	230
6	Fireplace Lounge	4.6 x 19.0 x 4.0	106.1	1,142.1	no	18	–	–	–	60	–	80
7	Gallery I	4.1 x 7.2 x 2.3	65.5	705.0	yes	18	–	–	12	30	30	50
8	Gallery II	14.0 x 11.3 x 2.3	158.2	1,702.9	yes	32	31	70	72	120	120	140
9	falk's Bar at the hall of mirrors	16.1 x 7.6 x 4.6	126.5	1,361.6	yes	–	–	–	–	–	–	120
	Ballroom Ensemble complete**	–	1,497.0	16,113.6	yes	–	–	350	464	720	1127	1370
10	Emporen Parlour	7.5 x 6.2 x 2.3	44.7	481.1	no	8	–	–	–	10	–	–
11	Komödie im Bayerischen Hof (theatre)	–	311.2	3,349.7	no	–	–	–	–	–	570	570

\* 1+2+3+4 \*\* 1+2+3+4+5+6+7+8+9  
Seating including standard stage (6m x 4m)

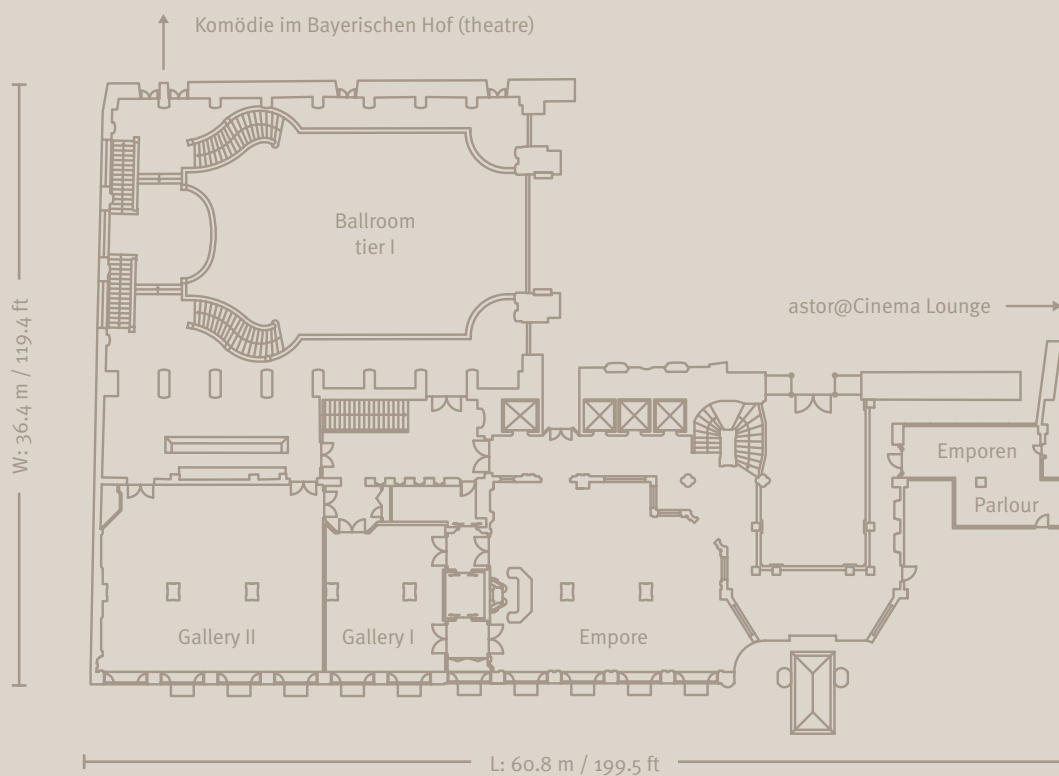


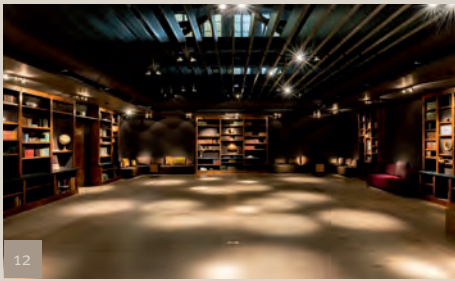
## Technical details of the ballroom

- Height 8.7 metres
- Glass roof 10.5 x 8.5 metres, can be opened on both sides in 2 minutes
- 16 suspension points for a total of max. two tons weight
- Can be completely darkened
- Focussed lighting by means of 36 moving lights in all colours
- 14 video beamers project running films and pictures onto the hall walls on request
- Optimal acoustics thanks to a Bose loud speaker system
- 2 galleries with connection to further function rooms
- Hoist gates extend the ballroom to a Ballroom Ensemble with around 1,500 sqm / 16,145.87 sqft
- Flexible stage (height up to 1m, size up to 70 sqm / 753.5 sqft)



## Mezzanine





12



13



16



15



21

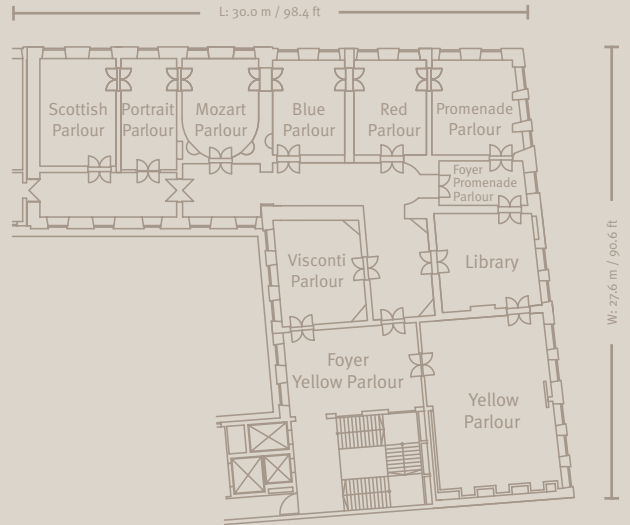
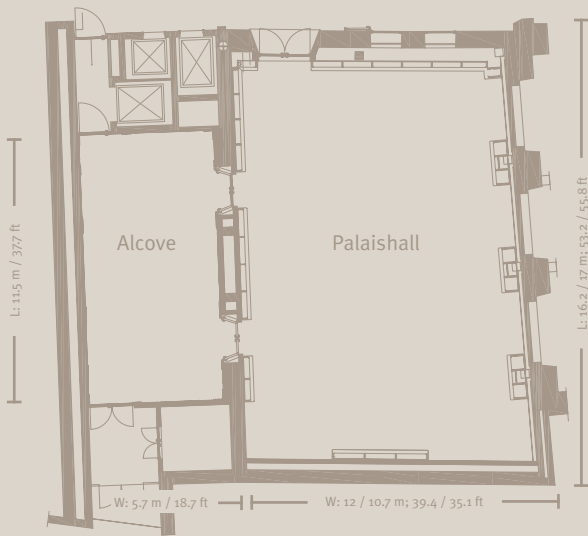


19

Alcove: 63 sqm / 678.1 sqft  
H: 2.9 m / 9.5 ft

Palaishall: 185 sqm / 1991.3 sqft  
H: 3.1 m / 10.2 ft

Palais Montgelas, 1st floor: 448.6 sqm / 4,828.7 sqft



Palais Montgelas ground floor and 1st floor												
Rooms	L x W x H in m	Size in sqm	Size in sqft	Daylight	Boardroom	U-shape	Cabaret	Classroom style	Banquet	Theatre style	Reception	
12	Palaishall	16.2 x 10.7 x 3.1	185.0	1,991.3	yes	34	37	63	104	120	180	180
13	Alcove	11.5 x 5.7 x 2.9	63.0	678.1	no	26	–	–	–	30	–	50
14	Yellow Parlour	10.9 x 8.3 x 3.4	85.8	923.5	yes	26	33	35	52	60	70	70
15	Library	6.4 x 5.6 x 3.6	35.7	384.3	yes	12	15	–	–	16	20	25
16	Promenade Parlour	6.1 x 5.3 x 3.5	32.8	353.1	yes	12	15	–	–	16	16	20
17	Red Parlour	6.1 x 5.3 x 3.5	28.4	305.7	yes	10	–	–	–	10	18	–
18	Blue Parlour	6.1 x 4.7 x 3.5	28.4	305.7	yes	10	–	–	–	10	18	–
19	Mozart Parlour	6.3 x 5.0 x 3.5	28.8	310.0	yes	10	–	–	–	10	18	–
20	Portrait Parlour	7.2 x 3.6 x 3.5	25.8	277.7	yes	10	–	–	–	10	12	–
21	Scottish Parlour	7.0 x 4.9 x 3.5	34.3	369.2	yes	14	–	–	–	16	20	–
22	Visconti Parlour	6.3 x 5.6 x 3.6	33.9	364.9	yes	14	15	–	–	16	20	20



27



26



25



28

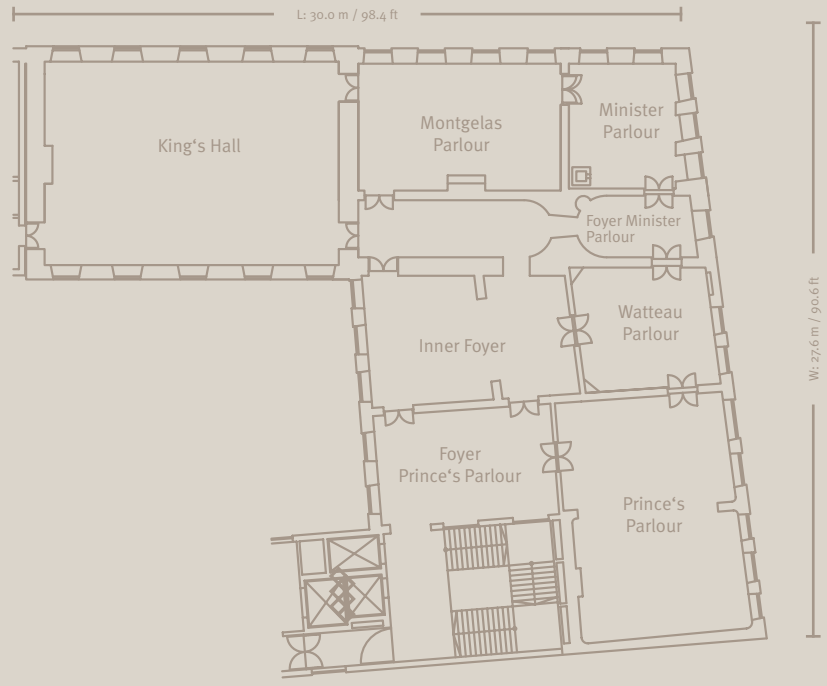


24



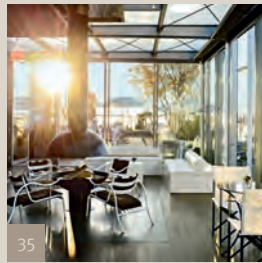
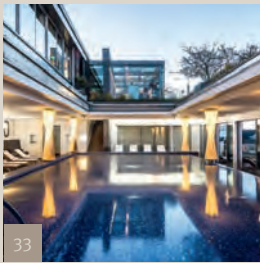
23

Palais Montgelas, 2nd floor: 514.5 sqm / 5,538.0 sqft

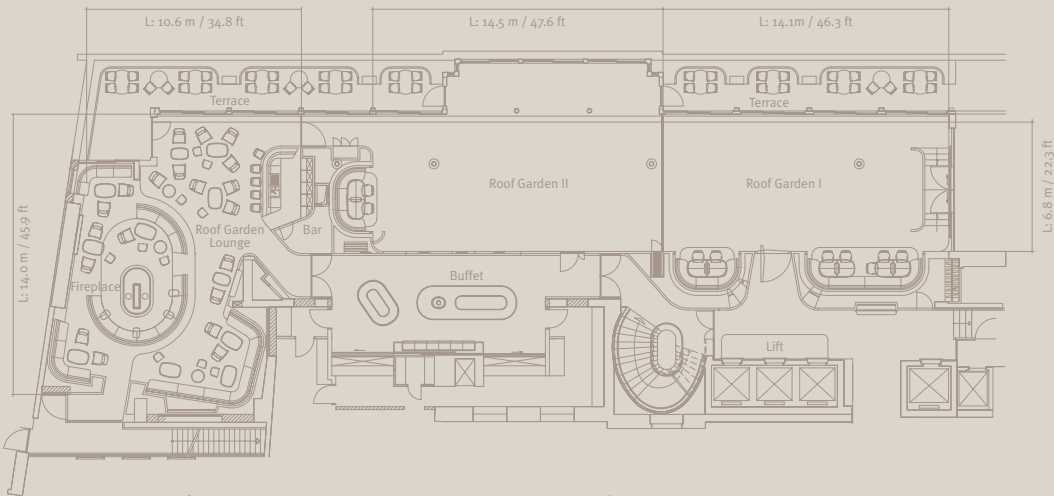


Palais Montgelas 2nd floor												
Rooms	L x W x H in m	Size in sqm	Size in sqft	Daylight	Boardroom	U-shape	Cabaret	Classroom style	Banquet	Theatre style	Reception	
23	Prince's Parlour	11.8 x 8.2 x 3.6	95.5	1,028.0	yes	28	33	35	52	60	80	70
24	Watteau Parlour	6.5 x 5.8 x 3.4	36.6	394.0	yes	12	15	-	-	16	20	25
25	Minister Parlour	6.1 x 5.2 x 4.7	31.8	342.3	yes	12	15	-	-	16	16	25
26	King's Hall	14.1 x 9.9 x 6.0	154.6	1,664.1	yes	32	40	70	112	120	160	150
27	Montgelas Parlour	9.9 x 6.1 x 4.7	59.6	641.5	yes	24	22	21	28	40	40	50
28	Inner Foyer	9.9 x 6.2 x 3.4	55.2	594.2	yes	-	-	-	-	-	-	50

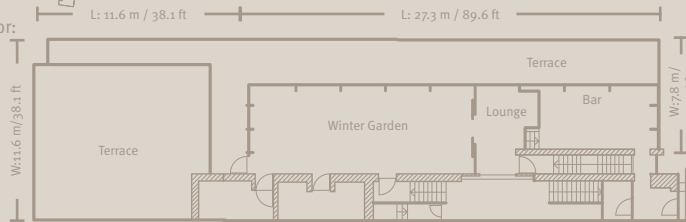




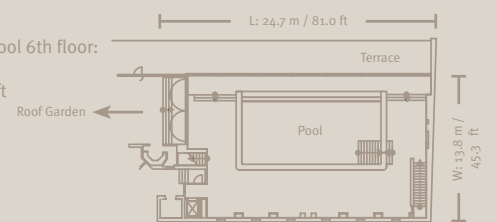
Roof Garden 6th floor:  
366 sqm  
3,939.5 sqft



Blue Spa 7th floor:  
316.2 sqm  
3,403.5 sqft



Blue Spa Pool 6th floor:  
203.1 sqm  
2,186.2 sqft



Roof Garden / Blue Spa												
Rooms	L x W x H in m	Size in sqm	Size in sqft	Daylight	Boardroom	U-shape	Cabaret	Classroom style	Banquet	Theatre style	Reception	
29	Roof Garden I	14.1 x 6.8 x 2.6	112.0	1,205.6	yes	29	32	-	45	64	72	70
30	Roof Garden II	14.5 x 6.8 x 2.6	136.0	1,463.9	yes	31	34	-	58	86	104	90
31	Roof Garden I and II	28.6 x 6.8 x 2.6	248.0	2,669.4	yes	-	-	103	150	192	160	
32	Roof Garden Lounge	10.6 x 14.0 x 3.1	118.0	1,270.1	yes	-	-	-	-	-	-	80
33	Blue Spa Pool	24.7 x 13.8 x 2.8	203.1	2,186.2	yes	-	-	-	80	-	-	140/200*
34	Blue Spa Bar & Lounge	11.8 x 3.8 x 2.6	45.2	486.5	yes	-	-	-	-	-	-	20/40*
35	Blue Spa Winter Garden	15.1 x 5.8 x 3.1	84.6	910.6	yes	26	30	-	-	50	50	90
36	Blue Spa Terrace complete	40.9 x 14.7	275.2	2,962.2	yes	-	-	-	-	70	-	-
	Blue Spa complete**	-	608.1	6,545.5	yes	-	-	-	-	-	-	500*

\* capacity including terrace \*\* 33+34+35+36

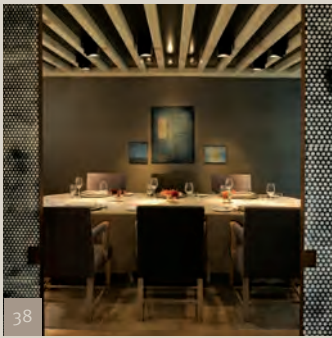




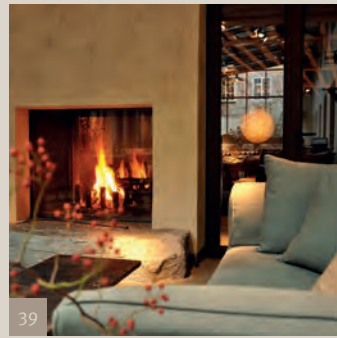
37



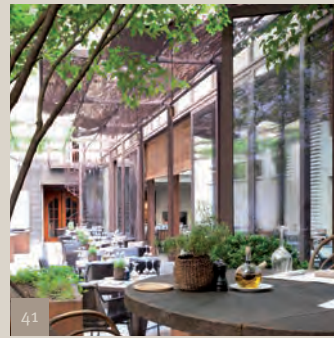
39



38



39

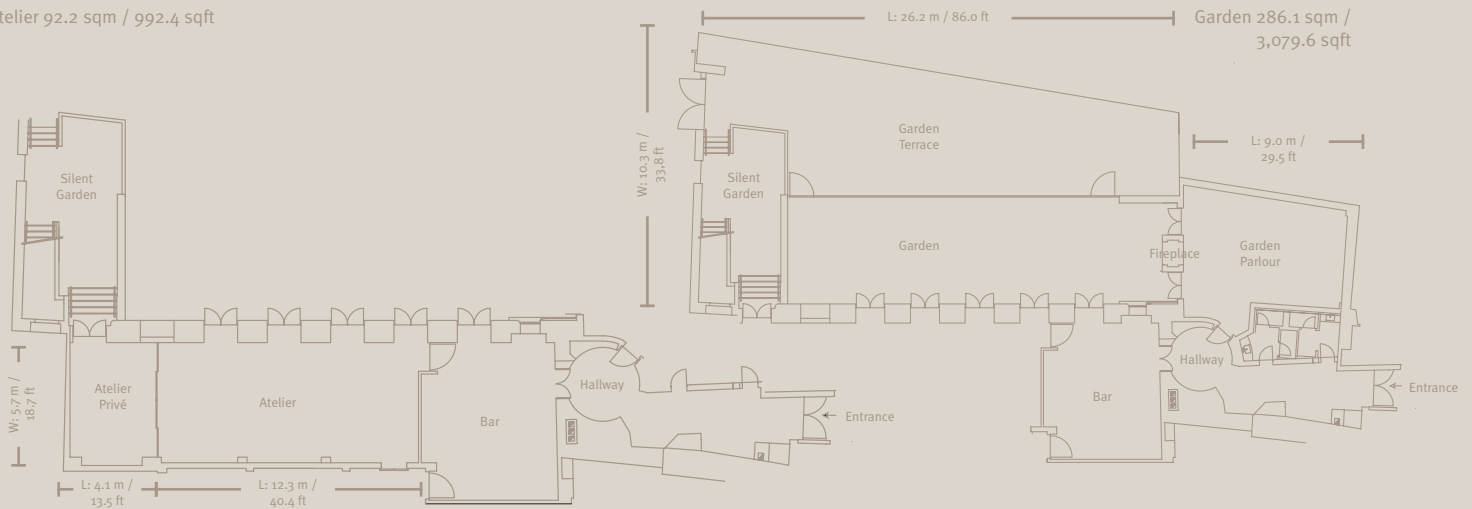


41



40

Atelier 92.2 sqm / 992.4 sqft



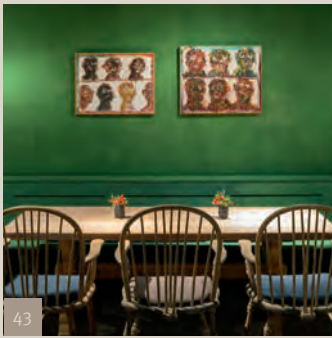
Restaurants: Garden / Atelier												
Rooms	L x W x H in m	Size in sqm	Size in sqft	Daylight	Boardroom	U-shape	Cabaret	Classroom style	Banquet	Theatre style	Reception	
37	Atelier Restaurant	12.3 x 5.7 x 2.5	70.1	754.6	indirect	18	-	-	-	30	-	-
38	Atelier Privé	4.1 x 5.4 x 2.5	22.1	237.9	yes	10	-	-	-	10	-	-
39	Garden Restaurant	21.4 x 5.6 x 4.3	119.8	1,289.5	yes	30	-	-	-	54	-	-
40	Garden Parlour	9.0 x 4.8 x 2.4	43.2	465.0	indirect	24	-	-	-	26	-	-
41	Garden Terrace	26.2 x 4.7	123.1	1,325.0	yes	-	-	-	-	33	-	-



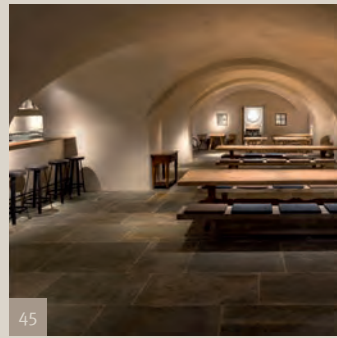
42



46



43



45



46



47



Restaurants: Palais Keller / Trader Vic's												
Rooms	L x W x H in m	Size in sqm	Size in sqft	Daylight	Boardroom	U-shape	Cabaret	Classroom style	Banquet	Theatre style	Reception	
42 Refektorium	15.8 x 6.5 x 3.0	93.3	1,004.3	no	28	-	-	-	44	-	60	
43 Palais Stube	13.5 x 5.9 x 2.8	79.7	857.9	no	26	-	-	-	60	-	80	
44 Tiroler Stube	5.1 x 3.8 x 2.2	17.6	189.4	no	-	-	-	-	18	-	-	
45 Palais Keller & Schwemme	23.6 x 9.3 x 3.0	169.5	1,824.5	no	-	-	-	-	78	-	100	
46 Trader Vic's	43.4 x 23.9 x 2.9	623.5	6,711.3	no	-	-	-	-	256	-	-	
47 Menehune Bar	7.5 x 3.5 x 2.5	27.5	296.0	no	-	-	-	-	18	-	-	

\* without kitchen and bakery





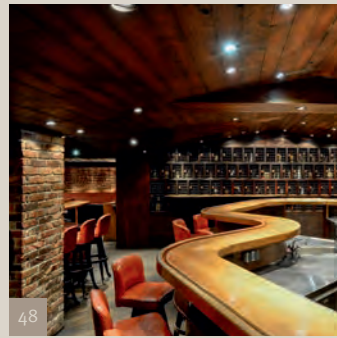
48



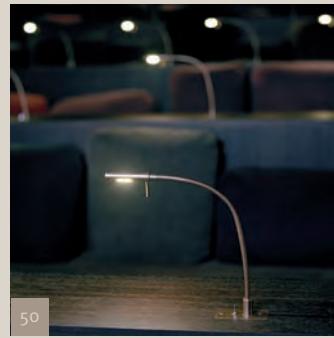
50



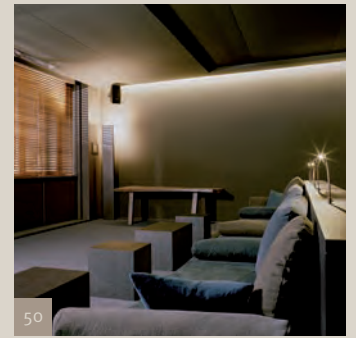
49



48

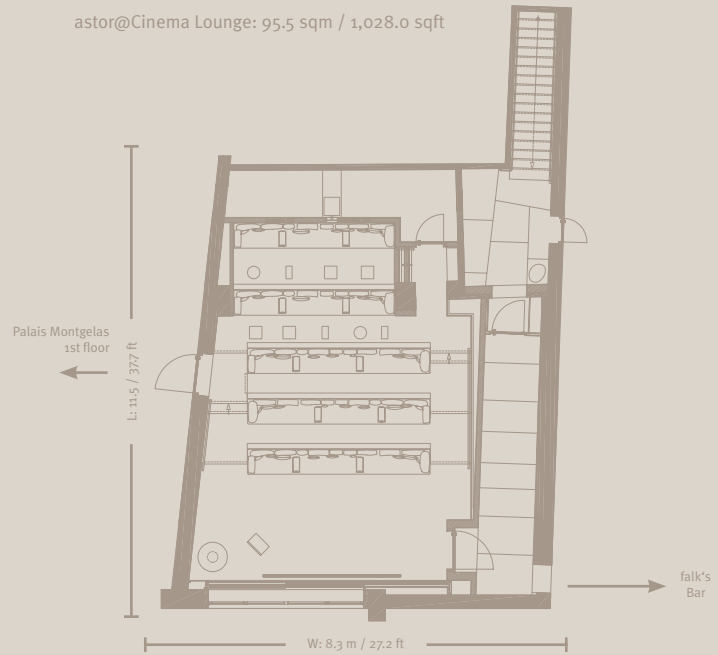


50



50

astor@Cinema Lounge: 95,5 sqm / 1,028.0 sqft



Night Club / astor@Cinema Lounge												
Rooms	L x W x H in m	Size in sqm	Size in sqft	Daylight	Boardroom	U-shape	Cabaret	Classroom style	Banquet	Theatre style	Reception	
48	Night Club*	17.2 x 14.9 x 3.2	304.0	3,272.2	no	-	-	-	-	125**	-	-
49	Piano Bar	12.5 x 4.9 x 2.4	61.3	659.8	no	-	-	-	-	42**	-	50
50	astor@Cinema Lounge	11.5 x 8.3 x 2.8	95,5	1,028.0	yes	-	-	-	-	38	-	-

\* including Piano Bar \*\* standard seating

# THE HOTEL BAYERISCHER HOF AT A GLANCE.

<b>Rooms:</b>	337 rooms, including 74 suites Individually designed in different styles, luxuriously furnished South and North Wing with 28 unique Deluxe Double Rooms and Deluxe Junior Suites as well as the 350 sqm Penthouse Garden Suite designed by Axel Vervoordt Spacious suite ensembles on the Panorama Floor and in the historic Palais Montgelas High-speed internet access via WLAN/ LAN Multimedia TV with over 300 international channels, Pay-TV
<b>Restaurants:</b>	Atelier: 3-star restaurant with regional and international creations at the highest level. Garden with summer terrace: Tried and tested Grand hotel classics and contemporary interpreted cuisine Palais Keller: Historic vaulted cellar with a modern interpretation of Bavarian specialities and with its own bakery Trader Vic's: Polynesian specialities from the beechwood oven, based on original recipes Blue Spa Lounge and Winter Garden with Terrace: Light wellness cuisine above the roofs of Munich
<b>Bars:</b>	falk's Bar: Modern, award-winning bar in the listed hall of mirrors. Trader Vic's Bar and Menehune Bar: Legendary South Sea cocktails in an exotic ambience Blue Spa Bar: Cool drinks and a unique view of the old town Night Club Bar & Piano Bar: Cocktails and snacks with live music
<b>Entertainment:</b>	astor@Cinema Lounge: Enjoy the latest movies on comfortable lounge sofas. Komödie im Bayerischen Hof: Boulevard theatre at its best Night Club: One of the best jazz clubs in town Piano Bar: Small concert series with renowned pianists
<b>Wellness:</b>	Blue Spa: Unique wellness retreat on 1,300 sqm over four floors with a view over the rooftops of the city centre Pool with a glass roof that can be opened, steam bath, saunas, solarium, sun terrace, fitness studio Extensive range of treatments and massages, in-house beauty centre and hairdresser
<b>Event Rooms:</b>	40 air-conditioned banquet and event rooms Capacities from 17 to 1,500 sqm or 10 to 2,500 guests Ballroom ensemble: 1,497 sqm in Art Decó style with glass roof that can be opened Palais Montgelas: Individual event rooms in classical style, including the magnificent King's Hall astor@Cinema Lounge: 38 seats for presentations, film screenings and private events Roof Garden: live cooking stations and Roof Garden Lounge with bar and open fireplace Blue Spa Bar & Lounge: Winter Garden with open fireplace and terrace with a unique view to the Alps
<b>Service:</b>	24-hour room service, business centre, concierge service, hotel shop, voucher service, Shopping and art arcade, Sixt car rental, guarded underground car park
<b>Location:</b>	Perfectly situated in the old town district of Munich Within direct proximity to the most important sights: Frauenkirche, Viktualienmarkt, opera, museums, Residenz and Hofgarten Shopping opportunities with exclusive boutiques as well as the financial and business quarter
<b>Connections:</b>	International Airport Franz Josef Strauss: 35 km Main train station: 1 km Messe München: 8 km ICM International Congress Centre Munich: 8 km The Olympic Park Munich: 5 km Allianz Arena (football stadium): 10 km
<b>Other establishment run by the Volkhardt family:</b>	Volkhardts Wein, Kaflerstraße 15, 81241 Munich, Germany Phone +49 89.82 92 12-15, Fax +49 89.82 92 12-26 www.volkhardts.de, info@volkhardts.de

